

PART OF SEC. 31-32, T.7N., R.3E., S.L.B. & M.
EVERGREEN PARK SUBDIVISION NO. 1

LOTS 165-172, 200-213, 250-256, 310-314

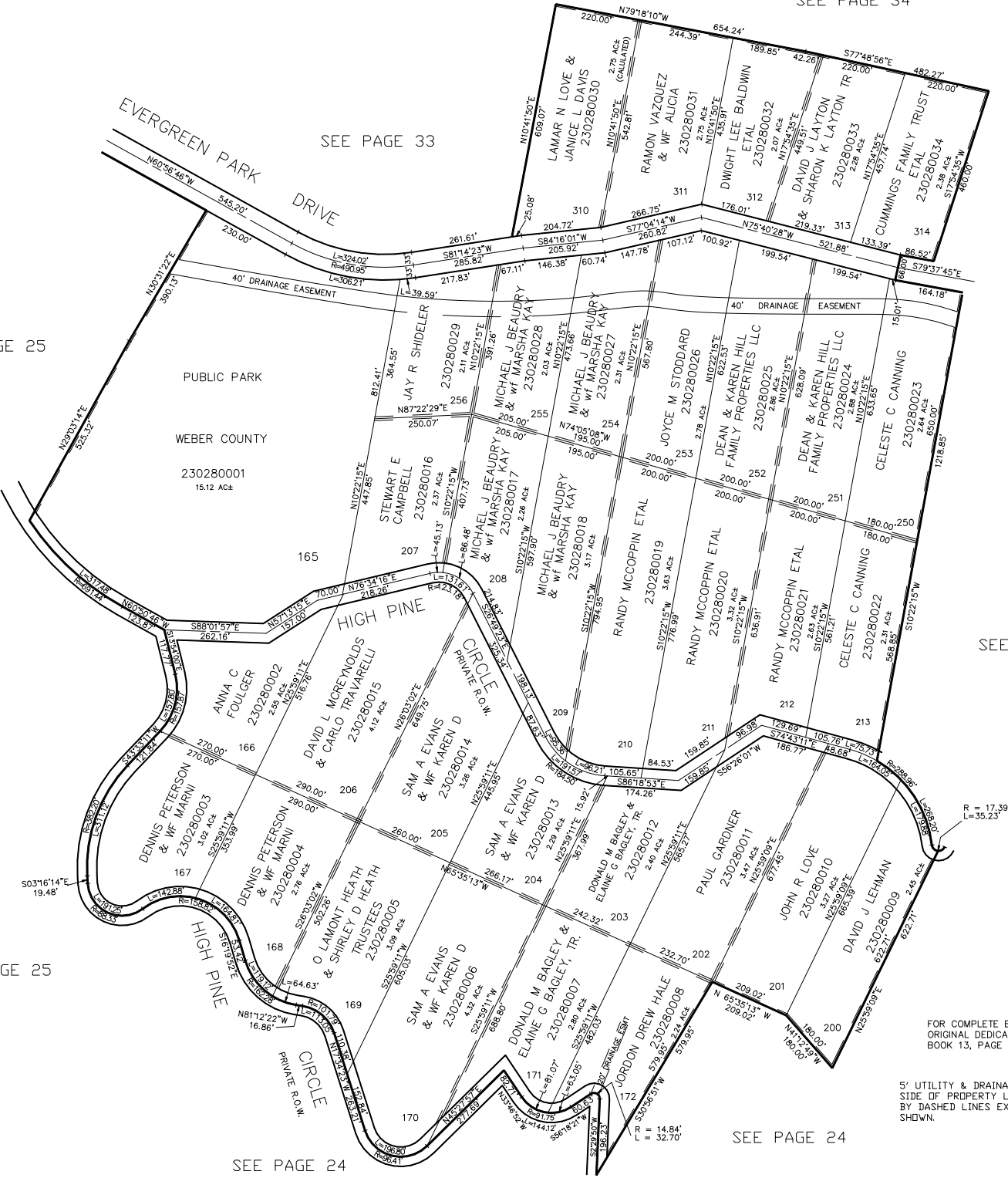
TAXING UNIT: 58

IN WEBER COUNTY

SCALE 1" = 200'

SEE PAGE 34

SEE PAGE 25



SEE PAGE 33

SEE PAGE 25

SEE PAGE 29

SEE PAGE 25

SEE PAGE 24

SEE PAGE 24

FOR COMPLETE ENG DATA SEE ORIGINAL DEDICATION PLAT IN BOOK 13, PAGE 58 OF RECORDS.

5' UTILITY & DRAINAGE EASEMENTS EACH SIDE OF PROPERTY LINES AS INDICATED BY DASHED LINES EXCEPT AS OTHERWISE SHOWN.